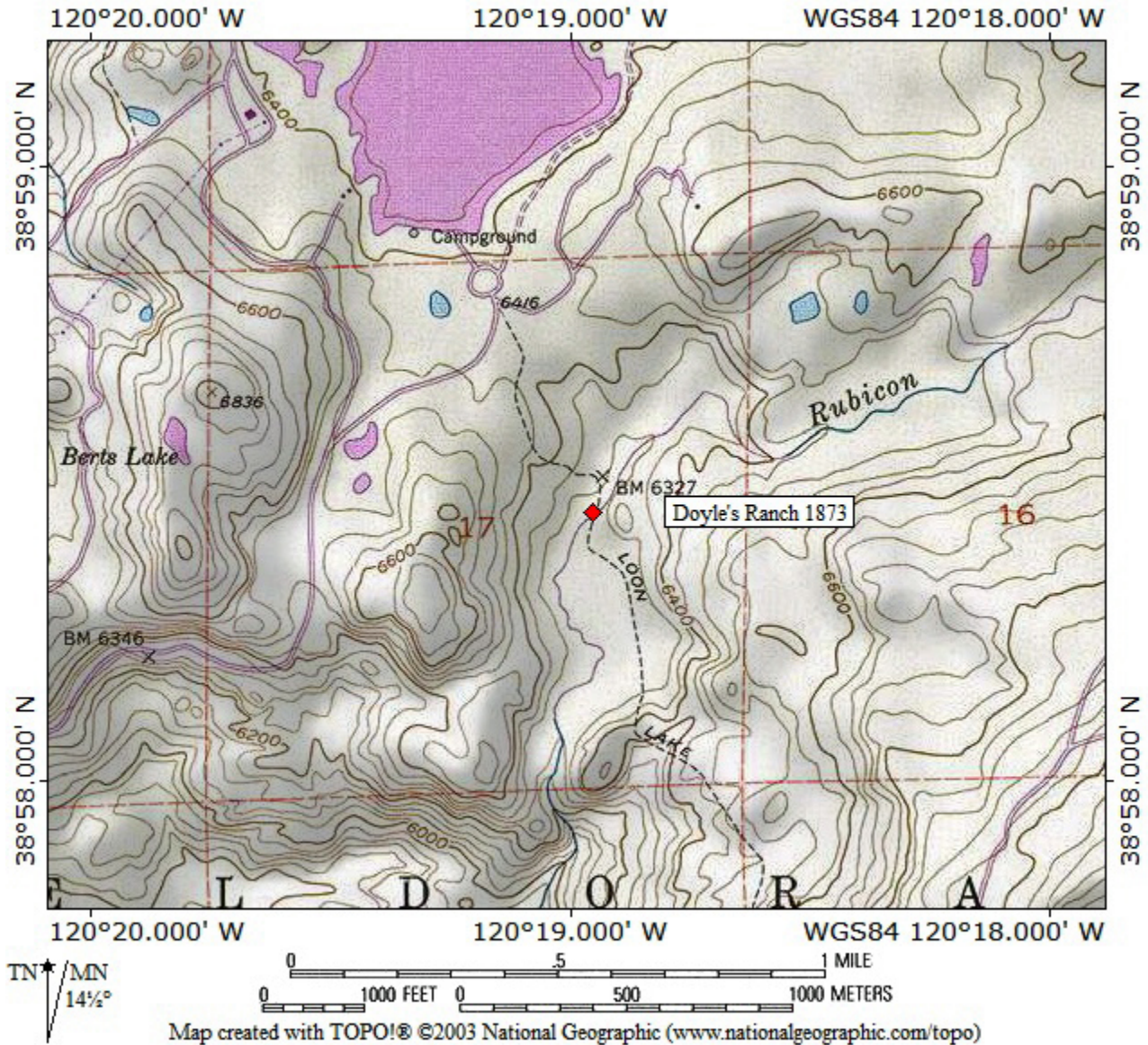


Doyle's Ranch-1873-South Fork of the Rubicon River between Loon Lake and Stone Cellar-Who is "Doyle?"

TOPO! map printed on 05/08/12 from "Untitled.tpo"



[Doyle's Ranch, Southeast of Loon and Pleasant Lakes-1873](#) His ranch is identified on the Amos Bowman Map of the Georgetown Divide holdings of the California Water Company, published in 1873 as well as on the [G. M. Wheeler Atlas Sheet 47 B, D, E Calif, Nev 1876/79](#). The info on the Wheeler Atlas was kindly volunteered by Doug Walker of the El Dorado County Historical Society and El Dorado County Museum. The ranch was located on the trail between the southwest part of Loon Lake over to Tell's Ranch right at the crossing of the South Fork of the Rubicon River, called "Little South Fork" on the map. The ranch location is but a 1/2 mile above present day Stone Cellar. Doyle's Ranch is a long time research effort to learn more about who Doyle was. Doyle, whoever he was, most certainly had a lower ranch on the Georgetown Divide, but any information or identification of that location or background on Doyle, continues to elude me. The search for Doyle is ongoing and anyone with any information on who he might have been, please drop me a note. The 1873 map was obtained from the UC Berkeley Water Resources Library from their collection on the California Water Company. The

California Water Company of San Francisco originally hired Amos Bowman, a Canadian engineer to do a full survey of the company holdings on the Georgetown Divide resulting in a formal report which included this map to the Board of Directors in 1874. His 1873 map is the definitive map of early El Dorado County, California and along with Sioli are the two major sources of early history in the county.

